



Skagit County WSU Extension
MASTER GARDENER PROGRAM
Discovery Garden

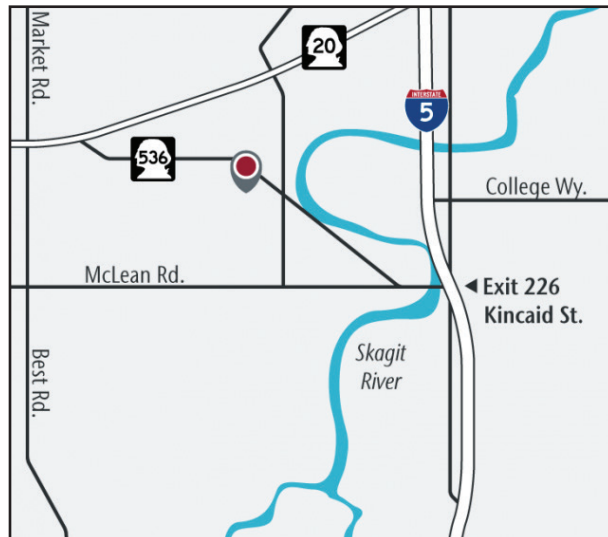
Skagit County Master Gardener Foundation is a nonprofit organization that supports the efforts of the Skagit County WSU Extension Master Gardener Program through various fundraising activities and management oversight of the Discovery Garden.

If you are interested in making a financial contribution to the program, or donating time and/or materials, please contact us at:

Skagit County Master Gardener Foundation
 PO Box 2801, Mount Vernon, WA 98273
 Office: 360-395-2367

Master Gardeners offer help with plant and gardening questions through our diagnostic clinics. Contact us at 360-395-2368 or <https://extension.wsu.edu/skagit/mg/clinics/>

Visit our websites to learn more:
<https://extension.wsu.edu/skagit/mg/>
<https://www.skagitmg.org/>



Open to the public daily, dawn until dusk



WSU EXTENSION
Skagit County

**Northwestern Washington
 Research and Extension Center**
 16650 State Route 536 (Memorial Highway)
 Mount Vernon, Washington 98273

Welcome to The Discovery Garden

We seek to increase access to plants, green spaces, and public landscapes to benefit the health and well-being of all members of our communities.

Master Gardener Mission Statement

We are trained volunteers who work in partnership with WSU Extension to inspire and educate the public and enhance the quality of life in the community by promoting science-based, sound gardening practices.

Look for signage throughout the garden introducing and explaining the planting and growing techniques. Information for accessing our online plant lists can be found at the entrance.

1. ENTRANCE GARDEN

The small gardens fronting the fountain and lining the path to the pavilion greet visitors with plants having year-round interest. Easy-care, layered plantings are chosen for the Pacific Northwest climate.

2. SHADE GARDEN

Does your garden have a “shady” personality? This garden suggests alternatives to sun-loving plants so even a shady garden can bask in color, texture, and smell.

3. COOL COLOR BORDER

Are you needing to feel cool and relaxed? This border creates a cool-feeling border by including plants with texture and shades of blue, green, purple, lavender, silver, and white.

4. POLLINATOR GARDEN

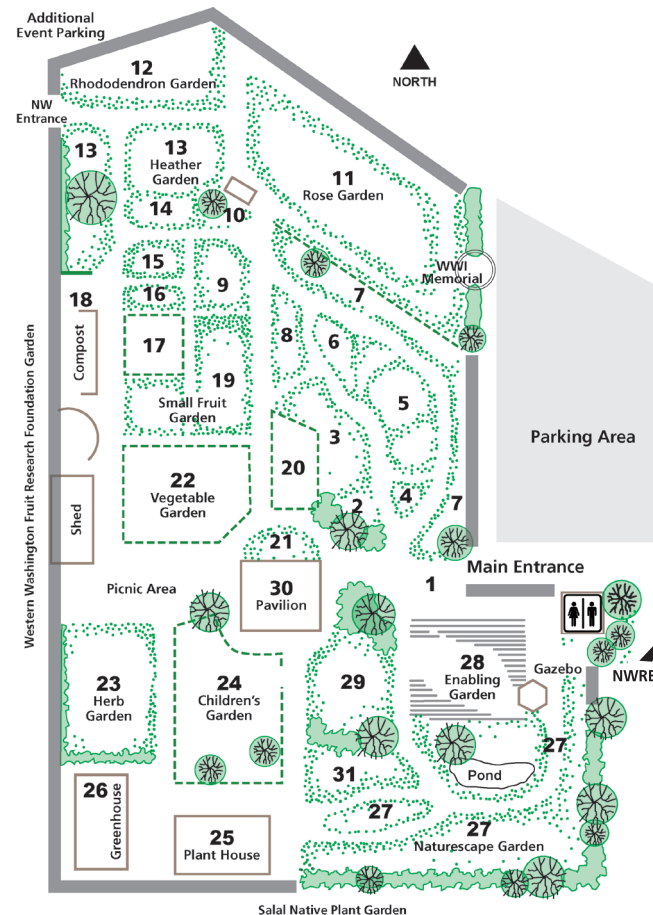
The Pollinator Garden is planted with an assortment of both native and non-native shrubs and perennials. Plants chosen are known to be nectar and pollen sources for a diversity of pollinators.

5. JAPANESE GARDEN

There are five distinct types of Japanese gardens: hill and pond, dry landscape, tea, courtyard, and stroll. Ours is of the stroll design. Odd numbers of plants and stones are used in groupings and spaced unevenly. Dry rock beds symbolize rushing rivers; large rocks represent mountains. Not surprisingly, water features are an integral part of Japanese gardens.

6. EASY CARE GARDEN

Once their root systems are well established, plants in this garden require little maintenance and minimal watering. In the fall, the garden is cleaned and mulched to add nutrients and keep weeds down. In the spring, a bit of weeding is needed, but by summer, the foliage is so dense that very few weeds appear.



7. FOUR SEASONS GARDEN 🌿

Year-round interest with minimal care are key to maintaining this diverse mixed border garden. A rail fence, trees and shrubs form a backdrop for perennials, vines, and biennials punctuated by running ground covers. Annuals and bulbs add a pop of seasonal color. Evergreens and foundation specimens anchor the garden's silhouette.

8. FALL AND WINTER GARDEN 🌿

Featured here are plants that perform from September to March. Fall-blooming perennials, bright berries, and brilliant foliage give way to bare branches and beautiful bark. Evergreen foliage, winter blooms, and early bulbs make way for the onset of spring.

9. DOC'S ARBOR 🌿

Created in memory of Dr. Richard "Doc" Hoag, one of a small group of master gardeners who envisioned the Discovery Garden. He and his wife gave the first "seed" money donation. Doc grew grapes and made many different kinds of wine.

10. ORNAMENTAL GRASSES 🌿

Mingling well with perennials and shrubs, here selected grass varieties offer screening, provide texture, or create a relaxing atmosphere. Grasses for different growing conditions provide many options to consider.

11. ROSE GARDEN 🌿

Master gardeners assumed care of this garden from the local rose society in spring 2006. The rose garden is also the site of the Skagit County WWI monument.

12. RHODODENDRON GARDEN 🌿

Begun in 2007, this garden provides a harmonious space to view the wide variety of rhododendrons that can be grown in the Pacific Northwest climate.

13. LLOYD EIGHME'S HEATHER GARDEN 🌿

With year-round interest, heather is in bloom every month in this garden. These varieties show growth patterns from ground covers to tree forms.

14. IRIS GARDEN 🌿

The iris plantings display different species and their bloom cycles from early spring throughout the winter. Rocks create "rooms" for companion plantings that provide interest while the irises are resting.

15. GROUND COVERS AND CONIFERS 🌿

Ground covers can be used to smother weeds, fill in areas under trees, stabilize hillsides, soften the edges of pathways, and reduce evaporation. Here master gardeners have showcased commonly available shade and sun-tolerant plants and dwarf conifers.

16. SUCCULENT GARDEN 🌿

Available in a wide variety of textures, shapes, sizes, and colors, succulents are drought tolerant and easy to propagate. They are low-maintenance plants requiring well-drained soil and full sun for optimal growth. Hens and chicks, sedums, and stonecrops are easy to grow and are hardy in this area.

17. DIG-IT! SCHOOL GARDEN 🌿

Master gardeners host day-long field trips for area 2nd and 3rd graders. DIG-IT!, one of six activities, gives students hands-on gardening experience in the style of the Three Sisters garden—beans, corn, and squash—a planting technique used by native cultures.

18. COMPOSTING AREA 🌿

Magic happens here! Throughout the growing season, the sorted and chipped prunings, browns, and greens are combined and turned. Mother Nature does her part, giving us nutrient-rich compost in a few months.

19. SMALL FRUITS 🌿

Berries, Berries, Berries! Exhibited here are Heritage, Willamette, and Blackcap raspberries along with three types of strawberries. Thornless boysenberries, triple crown blackberries, black and clove currants, and rhubarb round out the other small fruits.

20. COTTAGE GARDEN 🌿

This somewhat whimsical garden dates back to the 1300s when space was limited around each home. Ornamental and edible varieties were commonly planted together to maximize every available inch.

21. FUCHSIA GARDEN 🌿

Originally planted by members of the North Cascade Fuchsia Society, all the varieties in this garden are hardy enough to survive Skagit County winters. Even in the shade of the pavilion, the garden blooms in beautiful colors from early summer until frost.

22. VEGETABLE GARDEN

Raised, no-till garden beds and easy access pathways are featured in this garden. Old favorites and new varieties are showcased in a home-style garden fit for our Pacific Northwest maritime climate. Techniques demonstrate maximizing micro-climates within the space, show various trellising styles, and produce a wide range of vegetables and flowers in an attractive setting.

23. HERB GARDEN 🌿

Skagit Valley's climate is perfect for herbs. The typical English herb garden's structure, history, purpose and order have been interpreted for Northwest living. Different hedging materials surround the formal design creating a room-like feel with themed gardens informally planted within.

24. CHILDREN'S GARDEN 🌿

In this garden, parents and children share the pleasure of gardening and find ideas for their own yards. The entry through a weeping mulberry is a perfect place to play hide-and-seek. Visitors enjoy a snack with Alice and the Queen of Hearts at the picnic table. A game of checkers, a splash in the water, or helming the boat are all possible. Kids of all sizes can exchange a book at the Children's Garden Lending Library.

25. PLANT HOUSE 🌿

This is where Master Gardeners propagate and nurture perennial plants throughout the year for the Plant Fair each May.

26. GREENHOUSE 🌿

Master Gardeners start seeds and take cuttings for new plants that are used in the Discovery Garden or sold at the Plant Fair. Public classes on plant propagation and seed starting are also held here.

27. NATURESCAPE 🌿

This informal garden room features meandering footpaths bordered by native and non-native plantings. Stroll the paths and contemplate the variety of ecosystems represented by the sunny meadow, the pond, and the shady corner. Be inspired to design your garden as a personal green space isolated from adjacent buildings and traffic.

28. ENABLING GARDEN 🌿

The six raised beds and ergonomic tool display illustrate ways to garden for those with limited strength, energy and physical ability. Scented, colorful, textured plants are featured in the raised beds, some of which offer sitting ledges.

29. JOE'S PLACE 🌿

The large anchor at the entrance is in memory of Navy veteran, Joe Dupré, an early graduate of the Master Gardener Program. Some of Joe's favorite plantings reside here—primroses, fuchsias, fig tree and ferns.

30. PAVILION 🌿

This sheltered gathering place is used for master gardener lunches, educational activities, seminars, and workshops. Reserve the space through our website skagitmg.org.

31. MEADOW 🌿

Designed as an open area with year-round interest, the Meadow is a low-maintenance, large space incorporating ornamental grasses, native plants, and a wildlife snag to create visual interest in an otherwise lackluster space.

🌿 History of The Discovery Garden 🌿

1994: Design begins to incorporate smaller, themed gardens into a larger garden.

1996: First donated trees, structures and fences are installed.

1998: Most of the smaller mini-gardens are completed.